


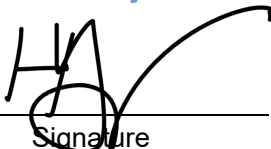
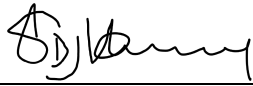
# PROJECT MONITORING PROGRAM

Surface Water Quality Monitoring Program  
Sydney Metro West – Western Tunnelling Package

## Document Details

Document Title	<b>Surface Water Quality Monitoring Program</b>
Project Name	<b>Sydney Metro West – Western Tunnelling Package</b>
Client	<b>Sydney Metro</b>
GA Project No.	<b>&lt;Insert GA Project No.&gt;</b>
Document Reference No.	<b>SMWSTWTP-GLO-1NL-EN-PRG-000001</b>
Principal Contractor	<b>Gamuda Australia Branch</b>
ABN	<b>27 632 738 768</b>
Project Address	<b>&lt;insert project name&gt;</b>

## Document Authorisation

<b>Stephanie Mifsud</b> <b>Approvals Manager</b>	<b>Hayley Young</b> <b>Environment &amp; Sustainability Lead</b>	<b>Simon Hussey</b> <b>Project Director</b>
		
Signature	Signature	Signature
<b>24/05/2022</b>	<b>24/05/2022</b>	<b>24/05/2022</b>
Date	Date	Date

# TABLE OF CONTENTS

Document Details.....	2
Document Authorisation.....	2
<b>DOCUMENT CONTROL .....</b>	<b>4</b>
Revision History .....	4
<b>1 INTRODUCTION .....</b>	<b>5</b>
1.1 Project Description.....	5
1.2 Context.....	7
1.3 Environmental Management System Overview .....	7
1.4 Consultation Requirements.....	7
1.5 Certification and Approval.....	8
<b>2 PURPOSE AND OBJECTIVES.....</b>	<b>9</b>
2.1 Purpose.....	9
2.2 Scope.....	9
<b>3 OBJECTIVES .....</b>	<b>10</b>
<b>4 LEGAL AND OTHER REQUIREMENTS .....</b>	<b>11</b>
4.1 Legislation and Guidelines.....	11
4.2 Environmental Protection Licence (EPL) .....	11
4.3 Project Requirements .....	11
<b>5 SMART PRINCIPLES.....</b>	<b>12</b>
<b>6 EXISTING ENVIRONMENT.....</b>	<b>13</b>
6.1 Catchment Description.....	13
6.2 Water Quality Objectives (WQOs) .....	14
6.3 Baseline Surface Water Data.....	15
<b>7 SURFACE WATER QUALITY MONITORING .....</b>	<b>18</b>
7.1 Proposed Monitoring Locations .....	18
7.2 Monitoring Schedule .....	19
7.3 Sampling Methodology .....	20
7.4 Parameters and Contaminants of Concern.....	22
7.4.1 Water Quality Parameters.....	22
7.4.2 Surface Water Contaminants.....	22
7.5 Assessment of Results .....	23
<b>8 COMPLIANCE MANAGEMENT.....</b>	<b>25</b>
8.1 Roles and Responsibilities .....	25
8.2 Auditing .....	25
8.3 Reporting .....	25
<b>9 REVIEW AND IMPROVEMENT .....</b>	<b>26</b>
9.1 Continuous Improvement.....	26
9.2 Document Updates .....	26

9.3 Distribution .....26

**ATTACHMENTS.....27**

Attachment 1 – Compliance Matrix .....28

Attachment 2 – Proposed Sampling Locations .....31

Attachment 3 – Stakeholder Consultation.....32

## DOCUMENT CONTROL

The current document version number and date of revision are shown in the document footer. All changes made to the Management Plan during its implementation on a live project are to be recorded in the amendment tables below.

### Revision History

Revision	Date	Description of changes	Prepared by	Approved by
A	16/03/2022	Early Works Submission	Stephanie Mifsud	Simon Hussey
B	24/05/2022	Revised draft following stakeholder consultation	Stephanie Mifsud	Simon Hussey
C	02/06/2022	Final draft following review from Sydney Metro and Environmental Representative	Stephanie Mifsud	Simon Hussey



# 1 INTRODUCTION

## 1.1 Project Description

The scope of the work being undertaken under the Sydney Metro West Western Tunnelling Package works (WTP) (the Project) includes but is not limited to, the following:

- Westmead Station box excavation, including temporary support, stub tunnels, partially mined station cavern and crossover cavern including permanent lining and support
- Parramatta Station, including excavation of station box and associated support
- Clyde Maintenance and Stabling Facility (MSF), including permanent dive structure, portal, spur running tunnels, spur tunnel junction cavern, bulk earthworks, civil structures, utilities corridor, road crossing and creek diversion
- Rosehill Services Facility, including shaft excavation, permanent lining and lateral support
- A precast segment manufacturing facility at Eastern Creek
- Demolition and site clearance works
- Tunnelling between Sydney Olympic Park (SOP) and Westmead. Tunnelling will be undertaken by placing the tunnel boring machines (TBMs) at the Rosehill Services Facility box and retrieved out at the SOP Station Box and then placed back at the Rosehill Services Facility and retrieved at the Westmead Station Box. No surface works are proposed at SOP except for the retrieval of the TBM.

Refer to Figure 1 for the location of the WTP project.

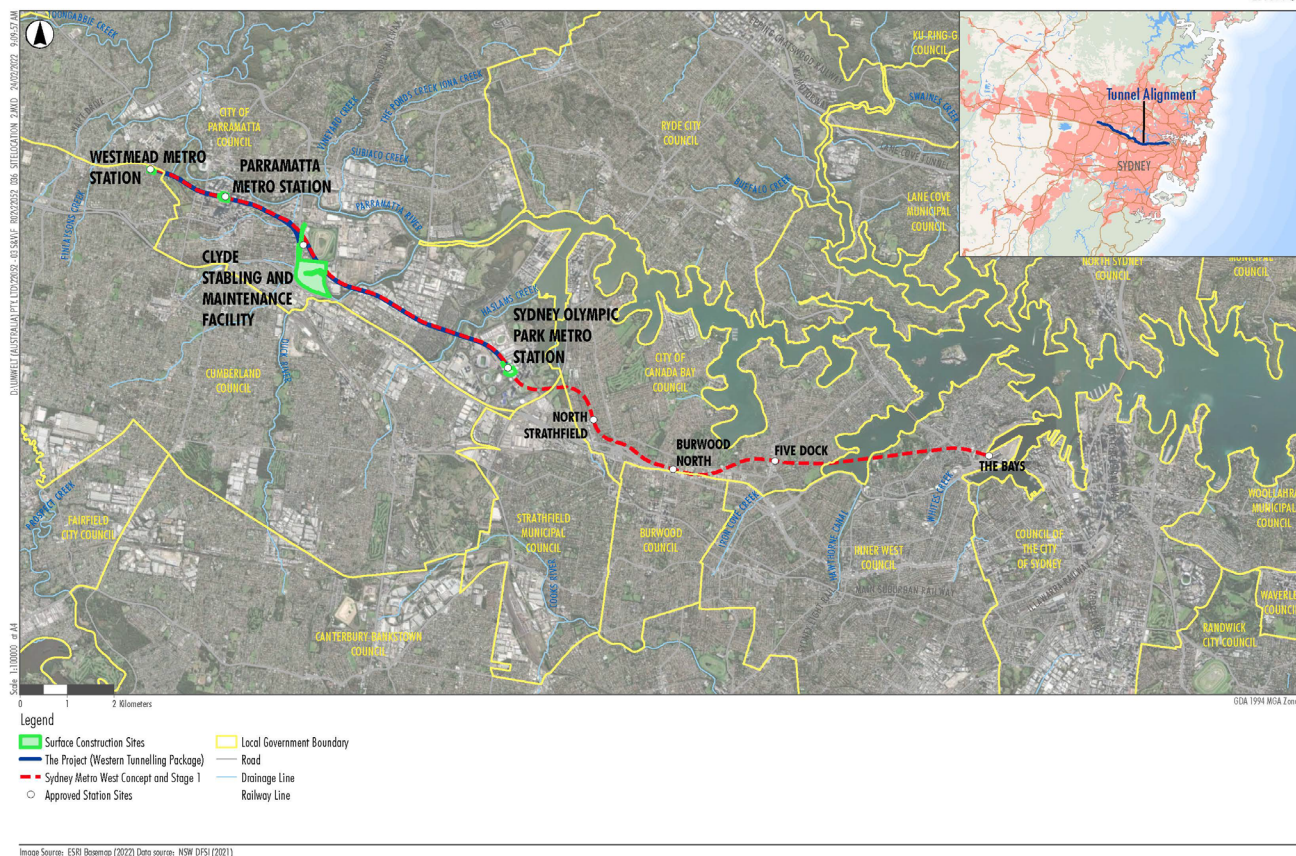


Figure 1: WTP Project Location

## 1.2 Context

The Construction Environmental Management Plan (CEMP) and sub-plans have been developed for the delivery of the WTP. It will be delivered by Gamuda Australia Laing O'Rourke Consortium (GALC). This Surface Water Quality Monitoring Program (SWQMP) forms part of the CEMP (SMWSTWTP-GLO-1NL-EV-PLN-000001).

Sydney Metro West – Westmead to The Bays Concept and Stage 1 received planning approval on 11 March 2021 (SSI 10038). The Project comprises the WTP, which is the western portion of Stage 1 of SSI 10038, from Sydney Olympic Park to Westmead. This SWQMP has been prepared to address requirements of the Minister's Conditions of Approval (MCoA) and any modifications to the MCoA, Revised Environmental Management Measures (REMMs) listed in the Sydney Metro West – Submissions Report, dated 20 November 2020, the Construction Environmental Management Framework (CEMF) requirements and all applicable legislation as they relate to the Project.

## 1.3 Environmental Management System Overview

An overview of the Environmental Management System (EMS) is provided in Section 3 of the CEMP.

Key interactions for this sub-plan with other management plans in the EMS include:

- Site Establishment Management Plan
- Soil and Water Management Plan
- Groundwater Management Plan
- Groundwater Monitoring Program
- Flora and Fauna Management Plan
- Waste Management Plan
- Spoil Management Plan.

## 1.4 Consultation Requirements

This monitoring plan builds on the consultation that had been undertaken during the EIS and Response to Submissions, managed by the project proponent, Sydney Metro.

Consultation of this surface water quality monitoring program will be undertaken with:

- DPIE Water, Sydney Water (if any Sydney Water assets are impacted), Cumberland City Council and City of Paramatta Council in accordance with the MCoA C14(c); and
- NSW Environment Protection Authority (EPA) and the abovementioned Councils in accordance with REMM SSWQ6

Consultation was undertaken over a 21-day period, commencing from 5 May 2022 with the submission of the SWQMP. The Consultation approach was applied across all plans and stakeholders and included issuing of the document to stakeholders accompanied by an introductory workshop. Following receipt of comments two weeks later, an offer was made to hold a comment review workshop to discuss and close comments directly with the stakeholder the following week. A second workshop would also be made available should there be any outstanding or technical issues requiring further discussion.

An introductory meeting was held on 24 March with City of Parramatta Council and 7 April with Cumberland City Council, which was organised by Sydney Metro and delivered by GALC. At the introductory meeting, GALC introduced themselves, the project team and outlined the scope of the WTP. The consultation approach was presented, and feedback invited on that approach. No issues were raised on the consultation approach during the introductory meetings.

None of the stakeholders took the offer of a comment review workshop in relation to their review of this SWQMP.

Details of issues raised by stakeholders during consultation is provided in Attachment 3, including copies of correspondence in accordance with MCoA A6. The approach to consultation is further outlined in the CEMP.

Ongoing consultation with stakeholders may be undertaken as required during project delivery. In line with CoA B11, a copy of the Construction Monitoring Reports will be published on the GALC project website.

## 1.5 Certification and Approval

Sydney Metro West – Westmead to The Bays Concept and Stage 1 was subject to environmental impact assessment under the NSW *Environmental Planning and Assessment Act 1979* (EP&A Act). It was also declared a Critical State Significant Infrastructure (CSSI) by the Minister for Planning & Public Spaces (the Minister).

An Environmental Impact Statement (EIS) has been prepared under Division 5.2 of the EP&A Act and in accordance with Part 3 of Schedule 2 of the Environmental Planning and Assessment Regulation 2000. Following exhibition of the EIS, an Amendment Report and Submissions Report were also prepared. After an assessment was carried out, the Minister determined that the Sydney Metro West – Stage 1 would be approved subject to conditions.

The planning approval (Infrastructure Approval SSI 10038) and related environmental assessment documents are located at: <https://www.planningportal.nsw.gov.au/major-projects/project/25631>.

This SWQMP will be approved by the Planning Secretary (DPE). This SWQMP will be submitted to the ER for endorsement and the Planning Secretary for approval no later than one (1) month before the commencement of construction. Construction will not commence until this SWQMP has been endorsed by the ER and approved by the Planning Secretary, unless otherwise agreed by the Planning Secretary.

This SWQMP, as submitted to the ER, including any minor amendments approved by the ER, will be implemented for the duration of construction.

## 2 PURPOSE AND OBJECTIVES

### 2.1 Purpose

The purpose of this SWQMP is to describe how Gamuda Australia – Laing O’Rourke Consortium (GALC) and its subcontractors proposes to monitor potential impacts to surface water during construction of the Project. This SWQMP forms an integral part of the project CEMP and GALC’s EMS. It applies to all works associated with Project works and establishes the environmental management controls to be implemented.

This SWQMP outlines how GALC will comply with and implement the applicable surface water quality monitoring requirements of the:

- Sydney Metro Construction Environmental Management Framework (CEMF)
- Minister for Planning and Public Space’s Conditions of Approval for the Project (MCoA)
- Revised Environmental Mitigation Measures (REMMs)
- SSI Modifications - Modification 1 Administrative Modification
- SSI Modifications - Modification 2 Clyde Stabling and Maintenance Facility – Current Status (16 May 2022) being: More Information Required
- Infrastructure Sustainability Council (ISC) Infrastructure Sustainability (IS) rating tool.

### 2.2 Scope

The Program will be implemented to monitor the effectiveness of mitigation measures applied during the construction phase of the Project. Monitoring of surface water will be undertaken to identify potential impacts and ensure an appropriate management regime can be implemented to address those impacts and manage local surface water quality.

The Program provides details of the surface water monitoring network, frequency of monitoring, and test parameters.

The following are not within the scope of this SWQMP:

- The management of surface water (e.g. collection, testing, and discharge) is not discussed in this SWQMP. These water management aspects are addressed separately in the Soil and Water Management Plan (SWMP) or the Groundwater Management Plan (GWMP).
  - The SWMP focuses on surface water collected within the construction site footprint (with the exception of the station boxes); and
  - Water generated from construction activities including the operation of the TBMs and roadheaders, stormwater collected within the station boxes, and other process water are assessed separately within the GWMP. This is due to most of these flows coming from groundwater sources/underground processes.
- Operational monitoring does not fall within the construction phase, and is not discussed in this SWQMP.



### 3 OBJECTIVES

This Program will be utilised to define, address, and implement surface water quality monitoring requirements and will apply for the duration of construction. This SWQMP outlines how GALC will comply with and implement the requirements from the following project documents:

- NSW Ministers' CoAs (issued on 11 March 2021 and modified on 29 July 2021)
- Sydney Metro CEMF
- The REMMs listed in the Sydney Metro West – Submissions Report, dated 20 November 2020
- The Sydney Metro West – Concept and Stage 1 EIS<sup>1</sup>

---

<sup>1</sup> Sydney Metro West – Concept and Stage 1 Environmental Impact Statement (EIS) prepared by Jacobs/Arcadis, dated 15 April 2020. Planning approval no. SSI-10038.

## 4 LEGAL AND OTHER REQUIREMENTS

Relevant legislation and guidelines and project specific requirements are detailed herein.

### 4.1 Legislation and Guidelines

The SWMP details a comprehensive list of legislation and guidelines relevant to the management of soil and water during the construction phase of the WTP. Specific water quality guidance and standards are listed below:

- ANZG (2018). Australian and New Zealand Guidelines for Fresh and Marine Water Quality (known as 'ANZG Guidelines')
- Australian and New Zealand Guidelines for Fresh and Marine Water Quality (ANZECC and ARMCANZ 2000)
- Approved Methods for the Sampling and Analysis of Water Pollutants in NSW (2004)

### 4.2 Environmental Protection Licence (EPL)

The WTP will require an Environmental Protection Licence (EPL). This is discussed in Attachment 1 of the SWMP. Any EPL conditions relevant to surface water monitoring will be incorporated into this program during the document review process.

### 4.3 Project Requirements

This monitoring program has been developed to satisfy the requirements of MCoA C14 and C15a. A full list of applicable MCoAs, REMM requirements, CEMF requirements, and EPL requirements are provided in Attachment 1.

## 5 SMART PRINCIPLES

In accordance with the requirements of CoA C15(j) the SWQMP is to be developed with consideration of SMART principles. This plan achieves this as follows:

1. Specific – the SWQMP for the WTP includes specific background data, sampling locations, as well as trigger values relating to specific construction sites
2. Measurable – parameters requiring reporting are all measurable
3. Actionable – the methodology for the collection and analysis of data is provided
4. Realistic – the SWQMP is achievable and not overly onerous
5. Timely – specific timeframes for the completion of tasks is provided



## 6 EXISTING ENVIRONMENT

### 6.1 Catchment Description

The data related to existing environment is sourced from Chapter 19 (Soils and surface water quality) of the Sydney Metro West Stage 1 Environmental Impact Statement (April 2020).

The three construction sites for the WTP lie entirely within the upper estuary of the Parramatta River Catchment, a tributary of Sydney Harbour. The catchment is highly urbanised and altered from its natural state. There are some areas of open space and parkland which influence the water quality and quantity and speed of flows within the catchment. The catchment is estuarine up until the Charles Street Weir is reached, adjacent to the business district of Parramatta. Above the weir, it is a freshwater environment where there are no tidal effects. The catchment is relatively flat, ranging from sea level in the east to 140 mAHD in the north-west. The three construction sites drain into sub-catchments of Parramatta River. These watercourses have generally been lined with concrete and channelised. Table 1 identifies the distance from the site to the listed receiving creeks, as well as the classification of creek as Key Fish Habitat and the proximity to SEPP Coastal Wetlands.

Table 1: Watercourses relevant to WTP

WTP Site	Watercourse	Distance from site	Receiving Waters	Sensitive Receiving Environments?
Westmead Metro	Domain Creek	360 m	Parramatta River	<ul style="list-style-type: none"> <li>No SEPP coastal wetlands within 500m</li> <li>Not Type 1 Key Fish Habitat</li> </ul>
Parramatta Metro	Parramatta River	250 m	Parramatta River	<ul style="list-style-type: none"> <li>Type 1 Key Fish Habitat</li> <li>Numerous SEPP Coastal Wetlands</li> <li>Potential habitat for threatened aquatic species and protected aquatic vegetation</li> </ul>
	Clay Cliff Creek	450 m	Parramatta River	<ul style="list-style-type: none"> <li>No SEPP coastal wetlands within 500m</li> <li>Not Type 1 Key Fish Habitat</li> </ul>
Clyde Stabling and Maintenance Facility	Duck River	Immediately adjacent to site	Parramatta River	<ul style="list-style-type: none"> <li>Type 1 Key Fish Habitat</li> <li>SEPP Coastal Wetlands within 500 metres</li> </ul>

WTP Site	Watercourse	Distance from site	Receiving Waters	Sensitive Receiving Environments?
	Duck Creek	Immediately adjacent to site	Parramatta River	<ul style="list-style-type: none"> <li>Type 1 Key Fish Habitat</li> <li>SEPP Coastal Wetlands within 500 metres</li> </ul>
	A'Becketts Creek	Immediately adjacent to site	Parramatta River	<ul style="list-style-type: none"> <li>No SEPP coastal wetlands within 500m</li> <li>Not Type 1 Key Fish Habitat</li> </ul>

## 6.2 Water Quality Objectives (WQOs)

The NSW Water Quality and River Flow Objectives (NSW Department of Environment, Climate Change and Water, 2006) provide environmental values (EVs) for the Sydney Harbour and Parramatta River regional catchments. The water quality objectives (WQOs) provide a framework to assess water quality in terms of whether the water is suitable for a range of EVs. Table 2 shows the EVs assigned to each of the watercourses relevant to WTP (referenced from NSW Water Quality and River Flow Objectives, DECCW).

Table 2: Environmental Values

Watercourse and/or receiving waters	Environmental Value (EV)				
	Aquatic ecosystems	Visual amenity	Primary contact recreation	Secondary contact recreation	Aquatic foods (cooked)
Domain Creek	X	X	X	X	-
Parramatta River and Sydney Harbour	X	X	X	X	X
Clay Cliff Creek	X	X	-	X	-
Duck River	X	X	X	X	X

Watercourse and/or receiving waters	Environmental Value (EV)				
	Aquatic ecosystems	Visual amenity	Primary contact recreation	Secondary contact recreation	Aquatic foods (cooked)
Duck Creek	X	X	X	X	X
A'Becketts Creek	X	X	X	X	

### 6.3 Baseline Surface Water Data

There has been no detailed pre-project baseline surface water monitoring data identified in the Sydney Metro West EIS documentation. As part of the EIS, a review of available existing water quality data collected from Sydney Water, Local Councils, University of Western Sydney and the WestConnex M4 East project was undertaken. This review indicated:

- Watercourses relevant to Stage 1 are generally in poor condition and are representative of a heavily urbanised system; and
- Some background levels exceed the ANZECC (2000) water quality trigger values for slightly to moderately disturbed ecosystems. These are summarised in Table 3.

Table 3: Existing water quality conditions of watercourses relevant to WTP (taken from table 19-6 of EIS)

Watercourse	Water quality characteristics relevant to ANZECC/ARMCANZ (2000) indicators <sup>1</sup>
Domain Creek	Low dissolved oxygen levels Elevated nutrient concentrations
Parramatta River (monitoring locations at Johnsons Bridge and Cumberland Hospital)	Elevated nutrient concentrations Elevated heavy metal concentrations High turbidity
Clay Cliff Creek	No existing data
Duck River	Low dissolved oxygen levels Elevated nutrient concentrations High turbidity
Duck Creek and A'Becketts Creek	Elevated nutrient concentrations

Watercourse	Water quality characteristics relevant to ANZECC/ARMCANZ (2000) indicators <sup>1</sup>
-------------	---

**Elevated concentrations of faecal coliforms**

*Note 1: Sources: City of Parramatta Council, Sydney Water, Cumberland City Council, WestConnex M4 East.*

In lieu of baseline surface water monitoring data from the EIS, monitoring data was sourced from other major projects to provide an indication of general waterway health. The monitoring data that was gathered from other projects was generally the background or median data that was used for those projects, as current monitoring data was not always readily available. The water quality data sourced from Appendix G of the WestConnex M4 Widening project EIS and Technical Paper 6 of the Parramatta Light Rail Stage 1 EIS (Jacobs, 2017) is presented in Table 4. , noting some of this data was sourced from Parramatta River Estuary Coastal Zone Plan (Cardno, 2012). A summary provided within Cardno (2012) reports average concentrations of nutrients and other parameters above ANZECC (2000) guidance.

*Table 4: Baseline Water Quality Data (Source: Table 4.2 WestConnex M4 Widening and the Parramatta Light Rail Stage 1)*

Indicator	ANZECC/ARMCANZ WQ Guidelines 2000	Duck River	Duck Creek (Kay St)	Parramatta River (Barry Wilde Bridge)	Parramatta River (Elizabeth St Footbridge)	Parramatta River (Upstream of Ferry Wharf)
Turbidity (NTU)	0.5–10	37.1	24.1	14.3	10.05	14
Dissolved Oxygen (mg/L)	N/A	4.9	7.4	8.7	9.0	7.6
Dissolved Oxygen (%)	85-110	49.2	67.3	95.4	98.2	82.4
Conductivity (mS/cm)	Lowland rivers: 125–2200 µS/cm	7.00	1.42	452.5	457	432
Salinity (ppt)	N/A	7.5	0.71	-	-	-
pH	7.0 – 8.5	7.50	7.98	7.97	8.20	7.4

Recent water quality data for Domain Creek is limited, comprising of a short-term monitoring program carried out in 2015 by the University of Western Sydney, as identified in Technical Paper 6 Jacobs, 2017. Monitoring indicated that the water quality of Domain Creek near its confluence with the Parramatta River was poorly oxygenated (median ~62 per cent saturation). It was inferred that Domain Creek is slightly eutrophic and that other indicators including pH, turbidity and conductivity fell within recommended guideline limits for protection of aquatic ecosystems. Additional baseline data will also be gathered prior to the commencement of construction – and in

particular, the commencement of ground disturbance that has the potential to cause runoff. A minimum of at least two monthly baseline monitoring events will be carried out to allow for direct comparison to baseline data captured immediately prior to construction commencing.

## 7 SURFACE WATER QUALITY MONITORING

### 7.1 Proposed Monitoring Locations

The proposed surface water quality monitoring sites are indicated in Table 5 below and shown in the maps included in Attachment 2. These sites have been chosen (where applicable) as they are similar to surface water monitoring locations from previous infrastructure projects, such as the Parramatta Light Rail and M4 Widening, to enable a continuation of existing information. The locations comprise upstream and downstream monitoring locations targeting the construction sites and assessing confluences.

Due to potential access constraints, including potential health and safety risks, the final locations will be determined once field reconnaissance has been completed and safe access and egress confirmed.

Table 5: Proposed Monitoring Locations

Sample Name	Waterway	Rationale	Nearest Access Point	Coordinates
SW01-WTP	Duck Creek	Upstream of Clyde SMF Construction sites	Kay Street	33°49'50.82"S 151° 1'19.32"E
SW02-WTP	Duck Creek	Downstream of Clyde SMF Construction sites / before confluence with Duck River	Deniehy Street	33°49'58.58"S 151° 1'41.11"E
SW03-WTP	Duck River	Downstream of Clyde SMF Construction sites / after confluence with Duck Creek	Silverwater Boat Ramp off Clyde Street	33°50'5.32"S 151° 1'52.03"E
SW04-WTP	Parramatta River	Upstream of potential treatment plant discharge location	Parramatta River Walk (upstream Barry Wilde Bridge)	33°48'42.85"S 151° 0'25.03"E
SW05-WTP	Parramatta River	General streamflow sample	Parramatta River Walk (upstream Elizabeth Street Footbridge)	33°48'45.57"S 151° 0'30.41"E
SW06-WTP	Parramatta River	Targeting saltwater zone below weir	Parramatta River Walk (upstream Ferry Wharf)	33°48'47.83"S 151° 0'35.37"E

Sample Name	Waterway	Rationale	Nearest Access Point	Coordinates
SW07-WTP	Domain Creek	Downstream of Westmead Construction Site	West Domain Avenue	33°48'33.46"S 150°59'35.58"E
SW08-WTP	Duck River	Upstream of confluence with Duck Creek	Access from Deniehy Street via cycle path	33°83'52.91"S 151°02'94.05"E
SW09-WTP	A'Becketts Creek	Upstream of Clyde SMF construction sites	TBD – access to be confirmed	TBD

As discussed in Section 4.2, the WTP will require an EPL and all EPL conditions relevant to surface water monitoring will be incorporated into this program during the document review process. Thus, the proposed monitoring locations will be reviewed and will align with the discharge locations stated in the EPL.

The proposed monitoring locations may be subject to discussion with Sydney Water Corporation who manage the drainage assets and may be revised following further ground truthing and consultation to ensure the monitoring locations are representative of potential impacts, and to minimise (wherever possible) potential confounding issues of non-project impacts. Monitoring locations will also be determined in consideration of safe access and any property owner access/permission requirements. Where sampling locations are updated within the same reach of the same waterway, these will be minor and can be approved by the ER.

## 7.2 Monitoring Schedule

Monitoring of the proposed monitoring locations (Section 7.1) would occur prior to and during construction. During construction, surface water quality monitoring will be undertaken monthly (both in dry weather and wet weather conditions, where practicable). The monitoring data will be collated and compared against the WQOs and performance criteria (Section 7.4). Monitoring will also be completed after significant wet weather events and when surface water is discharged from construction sites (note this is untreated water, not water discharging from the water treatment plants).

Table 6: Monitoring Schedule

Type	Frequency	Standards	Responsibility
Baseline Water Quality Monitoring	At least one round prior to the commencement of construction at each of the construction sites.	WQOs ANZG 2018	Environmental Coordinator/Manager

Type	Frequency	Standards	Responsibility
Monthly Water Quality Monitoring	Monthly	WQOs ANZG 2018	Environmental Coordinator/Manager
Wet Weather Water Quality Monitoring	Occur on average once a quarter, within 48 hours (where practical) of a rainfall event that is > 25 mm of rain over a 24-hour period in the local catchment	WQOs ANZG 2018	Environmental Coordinator/Manager
Incident Response	At any time in response to a complaint or incident	WQOs ANZG 2018	Environmental Coordinator/Manager

Furthermore, water quality monitoring and/or sampling may be directed by the ER as part of an inspection action. All water quality monitoring will also include a visual inspection of the receiving waters to identify any anomalies.

### 7.3 Sampling Methodology

The sampling methodology to be adopted for the surface water quality monitoring program investigation is detailed in Table 7.

Table 7: Surface Water Sampling Methodology

Action	Description
Sample Naming Convention	All samples will be labelled with 'SW01-WTPSW02-WTP/etc' so as to facilitate their interpretation and compilation.
Sample Collection	<p>Sampling will be undertaken in accordance with the NSW EPA (2004) <i>Approved methods for the sampling and analysis of water pollutants in NSW</i> publication.</p> <p>Grab samples will be taken by using a sampling pole. The pole includes a fixed bottle attached to the end that is used to take the sample. This will be lowered, where possible, to at least 0.3m from the surface and at least 0.3m from the floor of the water body. The volume of sample collected will be sufficient for the required physio-chemical (field) parameter analysis using a multi-probe water quality meter(s).</p> <p>To ensure representative samples, the bottle is triple rinsed at the new sampling location prior to retrieving a sample. In between sampling events the sampling apparatus will be decontaminated and stored securely.</p>



Action	Description
	A clean pair of nitrile gloves will be used to collect the surface water samples.
Field Measures	Field physio-chemical parameters including electrical conductivity (EC), pH, Dissolved Oxygen (DO), Total Dissolved Solids (TDS), Oxidation-Reduction Potential (ORP), temperature, and turbidity will be measured at each sampling location using a fully calibrated multi-probe water quality meter(s) / turbidity kit or provided for laboratory analysis. Other observations including cloudiness, sheen, odour and colour may also be recorded. The multi-probe field water quality meter(s) will be calibrated against known standards, as supplied by the manufacturer, at the start and completion of each day of water quality sampling.
Field Results	Results for each monitoring location will be recorded on appropriate field sheets (hard copy or digital) using unique sampling identification nomenclature consisting of the sample date/time, location, sampler details, type and model number of instruments and measurement location.
Decontamination	Decontamination procedures will be performed before initial use and after each subsequent use. Any re-usable sampling equipment will be decontaminated between each sample location by scrubbing first with potable water, then scrubbing with a solution of Decon 90 (a phosphate-free detergent) in potable water, followed by a rinse in de-ionised water and placing the equipment on clean plastic or paper sheet prior to re-use.
Field QA/QC	Any sample to be sent to a laboratory will be subject to quality assurance protocols. As part of sampling the following will be undertaken: <ul style="list-style-type: none"> <li>• Duplicates will be collected and analysed at a rate of 1 in every 10 primary samples</li> <li>• Triplicates will be collected and analysed at a rate of 1 in every 20 primary samples</li> <li>• Rinsate samples will be collected and analysed at a rate of one every sampling event</li> </ul>
Calibration	All instruments will be calibrated in accordance with manufacturers specifications or relevant Australian Standards. Records of monitoring equipment calibration will be maintained by GLC throughout delivery of the Project. Any field calibrations will only use standard solutions that are within their recommended use-by date to ensure instruments are field calibrated accurately. Calibration records will be maintained.
Laboratory	Samples are to be transported to a NATA-accredited laboratory under documented chain-of custody protocols.

## 7.4 Parameters and Contaminants of Concern

The following details the water quality parameters and contaminants of concern that would be measured or analysed as part of the Program.

### 7.4.1 Water Quality Parameters

Previous monitoring data shows that some surface water quality parameters exceed the default ANZECC water quality trigger values for slightly to moderately disturbed ecosystems. This is not unexpected given the highly urbanised and disturbed area and receiving waterways surrounding the project.

Water quality parameters identified in the NSW Water Quality and River Flow Objectives are classified by the local ecosystem type and the environmental values of the area. Several water quality objectives can be attributed to the receiving watercourses associated with the WTP. To standardise the trigger values across the project the trigger values associated with Aquatic ecosystems have been adopted for the whole Project as they are the most conservative.

Table 8 summarises the adopted protection trigger values, based on the receiving watercourse type classification (i.e. WQO) of 'aquatic ecosystem (estuaries)', for each waterway associated with the project.

Table 8: Adopted Protection Trigger Values to maintain Water Quality Objectives and for Toxicants

Indicator / Parameter	Upper Estuary	Lowland Rivers**
Turbidity (NTU)	0.5 – 10	6 - 50
Dissolved Oxygen (%)	80 -110%	85 – 110%
Conductivity (µS/cm)	NA	125 - 2200
pH (units)	7.0 – 8.5	6.5 – 8.5
Oil and grease	None visible on surface	None visible on surface
Toxicants (listed below)	ANZG 2018	ANZG 2018

Note:

\* Based on ANZECC WQ Guidelines 2000 – Aquatic Ecosystem (Estuaries)

\*\* Waterways affected by urban development

Water quality will also be assessed against visual amenity guidelines including visual clarity and colour, surface films and debris, and nuisance organisms.

### 7.4.2 Surface Water Contaminants

As well as water quality parameters, GLC would collect baseline data and ongoing data for potential contaminants within surface water that may be mobilised due to construction activities on the construction sites.

The suite of contaminants is based on a review of the potential contaminants of concern that have been identified at the various construction sites through the EIS and, more recently, the Detailed Site Investigation (DSI) Program. The proposed list of potential contaminants of concern would include:

- Metals (As III, AS V, Cd, Cr III, Cr VI, Cu, Co, Fe, Hg, Pb, Mn, Ni, Zn)
- Benzene, toluene, ethylbenzene, xylene, naphthalene

- Polycyclic aromatic hydrocarbons
- Nutrients and Inorganics – total nitrogen, total phosphorous, total oxidized nitrogen, nitrate, nitrite, total ammonia
- Per- and polyfluoroalkyl substances (PFAS)
- Petroleum hydrocarbons

GLC would also regularly seek input from the DSI program to identify any other contaminants or contaminant groups to be considered within the program.

## 7.5 Assessment of Results

Results from the construction monitoring program will be compared with the performance criteria (Table 8) and with previous results and will be reported in and construction compliance monitoring reports as detailed in Section 8.3. Due to the highly variable background results outlined in Table 4 a step-based trigger action approach will be applied when reviewing and responding to the surface water quality monitoring results to determine the significance of the exceedance(s) and possible causes.

### Step 1

In the event of an exceedance of any of the trigger values, a review will be initiated to determine the significance of the exceedance and the possible causes.

### Step 2

A comparison will be undertaken between the upstream and downstream values. The following performance criteria will be used in the assessment of potential impacts from the site:

- Where the downstream value is greater than 2x than the upstream value for any parameter that exceeds the adopted trigger criteria upstream of the project site (i.e., ANZG / ANZECC DGVs), steps 3-4 would be followed.
- Where the downstream value exceeds the adopted trigger criteria (i.e., ANZG / ANZECC DGVs) and upstream value does not steps 3-4 would be followed.
- Where the downstream concentration of contaminants are consistent with, or less than the upstream contaminant concentrations, no further action would be taken.

### Step 3

Where the exceedance of the preliminary trigger value occurs, a review will be initiated to determine the significance of the exceedance and the possible causes. The review will include:

- Assessment of the baseline data for the relevant waterway to determine whether the values are within observed historic ranges
- Assessment of water quality data from sampling conducted as part of monitoring for the construction water treatment plant EPL
- Assessment of on-site recorded erosion/sediment control incidents or observations
- Assessment of other activities in the catchment including any local recent activities which may have resulted in the observed impacts
- and rainfall, recent rainfall records, other activities within the catchment and recent activities

Results will also be assessed as trends to determine whether concentrations of water quality parameters downstream of the site are increasing and present a potential or actual risk to water quality under chronic exposure conditions.

#### **Step 4**

If the exceedance is determined to be attributable to Project works, the event will be treated as an environmental incident and managed in accordance with the requirements of Section 3.10 of the CEMP. Corrective and preventative actions will be identified and implemented as part of that process.

## 8 COMPLIANCE MANAGEMENT

### 8.1 Roles and Responsibilities

The GALC Environment and Sustainability team's organisational structure and overall roles and responsibilities are outlined in Section 7.1 of the CEMP. Specific responsibilities for the implementation of environmental controls are detailed in the SWMP.

All employees, contractors and utility staff working on site will undergo site induction and targeted training relating to surface water management issues, detailed in the SWMP.

Further details regarding staff induction and training are outlined in Section 9 of the CEMP.

### 8.2 Auditing

Audits (both internal and external) will be undertaken to assess the effectiveness of environmental controls, compliance with this Program, CoA, and other relevant approvals, licenses and guidelines. Audit requirements are detailed in Section 11.3 of the CEMP.

### 8.3 Reporting

During construction, surface water quality data will be collected, tabulated and assessed against baseline conditions and performance criteria. The six-monthly monitoring reports will be submitted to the Planning Secretary, the ER, EPA and Sydney Water within 40 days of the reporting period unless otherwise agreed with the Planning Secretary. In accordance with CoA B11, a copy of the Construction Monitoring Report will be published on the project website within one week of its submission to DPIE via the Major Projects Portal. Separate from the Construction Monitoring Report, additional records relating to soil and water monitoring training, toolbox talks, monitoring results and audit results will be prepared, maintained, and stored in line with the CEMP and the SWMP. The complaints management and reporting procedure is described in the CEMP.

Where the Project EPL has additional requirements for reporting results, these will be added to the Monitoring Program once available.

## 9 REVIEW AND IMPROVEMENT

### 9.1 Continuous Improvement

Continuous improvement of this SWQMP will be achieved by the ongoing evaluation of environmental management performance against environmental policies, objectives, and targets for the purpose of identifying opportunities for improvement.

The continuous improvement process will be designed to:

- Identify areas of opportunity for improvement of environmental management and performance,
- Determine the cause or causes of non-conformances and deficiencies,
- Develop and implement a plan of corrective and preventative action to address any nonconformances and deficiencies,
- Verify the effectiveness of the corrective and preventative actions,
- Document any changes in procedures resulting from process improvement
- Make comparisons with objectives and targets.

### 9.2 Document Updates

The processes described above may result in the need to update or revise this SWQMP. This SWQMP will be reviewed and updated as needed or annually as a minimum, and may only be approved by the Environment and Sustainability Director, or their delegate.

Where minor amendments are required to this SWQMP, the revised SWQMP will be issued to the ER for review and endorsement in accordance with MCoA A30(j).

### 9.3 Distribution

A copy of the updated Monitoring Program and changes will be distributed to all relevant stakeholders in accordance with the approved document control procedure as detailed in the CEMP.

All GLC personnel and contractors will have access to this SWQMP via the project document control management system. The approved SWQMP will be published on the GALC website within one week of being approved and be publicly available until the end of the Construction Period.

A copy of the SWQMP will be published and maintained on the Project website, in accordance with MCoA B11. The SWQMP will be published within one week of its approval or before the commencement of any work to which they relate or before their implementation.

The document is uncontrolled when printed.

# ATTACHMENTS

## Attachment 1 – Compliance Matrix

The Minister’s Conditions of Approval (MCoA), Revised Environmental Management Measures (REMMs), Construction Environmental Management Framework (CEMF) requirements and Environmental Protection Licence (EPL) requirements that relate to this SWQMP are detailed in the following table.

Document	Condition no.	Condition Requirement	Document Reference
MCoA	C14c	The following Construction Monitoring Programs must be prepared in consultation with the relevant government agencies identified for each to compare actual performance of construction of Stage 1 of the CSSI against the performance predicted in the documents listed in Condition A1 of this schedule or in the CEMP:  (c) Surface water quality - DPIE water, Relevant Council(s), and Sydney Water (if Sydney Water’s assets are affected)	This document  Section 1.4
MCoA	C15	Each Construction Monitoring Program must provide:  (a) details of baseline data available including the period of baseline monitoring  (b) details of baseline data to be obtained and when  (c) details of all monitoring of the project to be undertaken  (d) the parameters of the project to be monitored  (e) the frequency of monitoring to be undertaken  (f) the location of monitoring	-  Section 6.3 / Section 7.2  Section 6.3 / Section 7.2  Section 7  Section 7.4  Section 7.2  Section 7.1



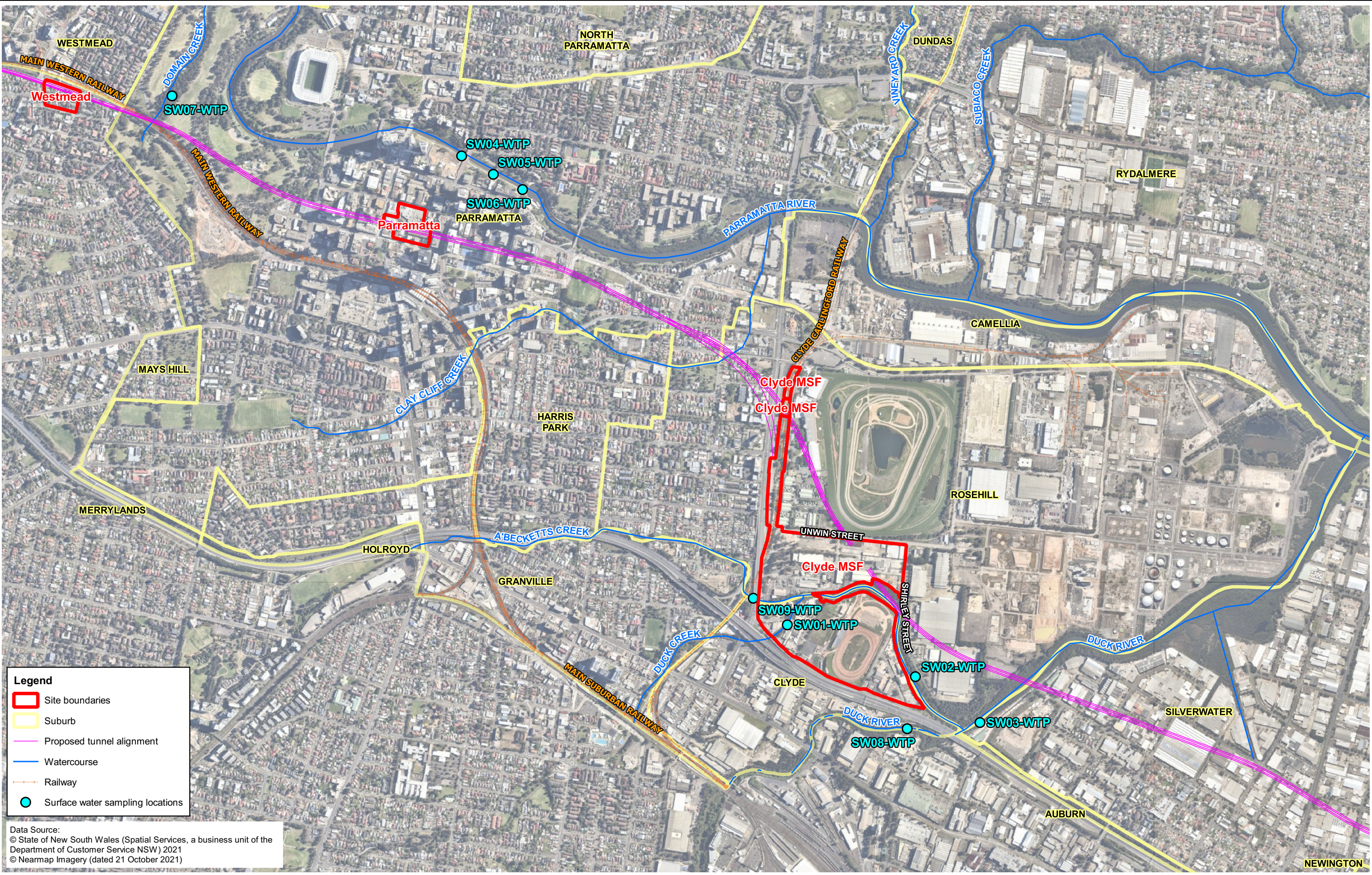
Document	Condition no.	Condition Requirement	Document Reference
			Attachment 2
		(g) the reporting of monitoring results and analysis results against relevant criteria	Sections 7.5
		(h) details of the methods that will be used to analyse the monitoring data	Section 7.5
		(i) procedures to identify and implement additional mitigation measures where the results of the monitoring indicated unacceptable project impacts	Section 7.5
		(j) a consideration of SMART principles	Section 5.0
		(k) any consultation to be undertaken in relation to the monitoring programs	Section 1.4 Attachment 3
		(l) any specific requirements as required by Conditions C16 to C17 of this schedule	Not relevant to this document
MCoA	C23	The results of the Construction Monitoring Programs must be submitted to the Planning Secretary, ER and relevant regulatory agencies, for information in the form of a Construction Monitoring Report at the frequency identified in the relevant Construction Monitoring Program.  Note: Where a relevant CEMP Sub-plan exists, the relevant Construction Monitoring Program may be incorporated into that CEMP Sub-plan.	Section 1.5 Section 8.3
MCoA	D117	Stage 1 of the CSSI must be designed and constructed so as to maintain the NSW Water Quality Objectives (NSW WQO) where they are being achieved as at the date of this approval, and contribute towards achievement of the NSW WQO over time where they are not being achieved as at the date of this approval, unless an EPL in force in respect of the CSSI contains different requirements in	Section 6 Section 7.4

Document	Condition no.	Condition Requirement	Document Reference
		relation to the NSW WQO, in which case those requirements must be complied with.	
REMM	SSQW6	<p>A surface water monitoring program would be implemented to observe any changes in surface water quality that may be attributable to Stage 1 and inform appropriate management responses.</p> <p>The program would be developed in consultation with the EPA and relevant Councils. The program would consider monitoring being undertaken as part of other infrastructure projects such as the WestConnex M4 East monitoring.</p> <p>Monitoring would occur during pre-construction and during construction at all waterways with the potential to be impacted. Monitoring sites could be located upstream and downstream of the potential discharges and would include sampling for key indicators of concern.</p>	<p>This Plan</p> <p>Section 1.4</p> <p>Section 7.2</p>
CEMF	CEMF12(a) vii	A description of how the effectiveness of these actions and measures would be monitored during the proposed works, clearly indicating how often this monitoring would be undertaken, the locations where monitoring would take place, how the results of the monitoring would be recorded and reported, and, if any exceedance of the criteria is detected how many non-conformances can be rectified.	Section 7

## Attachment 2 – Proposed Sampling Locations



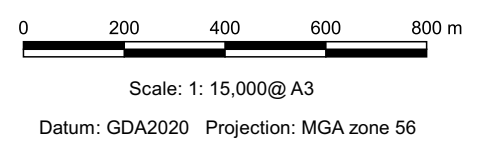
©CGIS 2019 File Path: \\epic-nas01\GIS\GIS\Epic Environmental\Projects\SC2021\SC210108.01 Gamuda SMW WTP Enviro Support\Workspaces\WTP Water Quality Monitoring Program\Figure F1 Sampling Locations.qgz



**Legend**

- Site boundaries
- Suburb
- Proposed tunnel alignment
- Watercourse
- Railway
- Surface water sampling locations

Data Source:  
 © State of New South Wales (Spatial Services, a business unit of the Department of Customer Service NSW) 2021  
 © Nearmap Imagery (dated 21 October 2021)



Draft

Gamuda Australia Laing O'Rourke Consortium  
 WTP Water Quality Monitoring Program

Figure F1  
 Sampling Locations



## Attachment 3 – Stakeholder Consultation

### Engagement Log

Stakeholder	Date of Engagement/ Attempted Engagement
DPI Water	<ul style="list-style-type: none"> <li>Sydney Metro sent DPI Water an invitation to review and comment on the SWQMP on 02/05/2022, which included a cover letter and the SWQMP as a PDF document</li> <li>DPI Water did not provide comments within the 21-day consultation period</li> </ul>
Sydney Water	<ul style="list-style-type: none"> <li>Sydney Metro sent Sydney Water an invitation to review and comment on the SWQMP on 17/05/2022, which included a cover letter and the SWQMP as a PDF document</li> <li>Sydney Water did not provide comments within the 21-day consultation period</li> </ul>
City of Parramatta Council	<ul style="list-style-type: none"> <li>Sydney Metro sent the City of Parramatta an invitation to review and comment on the SWQMP on 05/05/2022, which included a cover letter and the SWQMP as a PDF document</li> <li>The City of Parramatta Council did not provide comments within the 21-day consultation period</li> </ul>
Cumberland City Council	<ul style="list-style-type: none"> <li>Sydney Metro sent the Cumberland City Council an invitation to review and comment on the SWQMP on 05/05/2022, which included a cover letter and the SWQMP as a PDF document</li> <li>The Cumberland City Council provided comments on 12/05/2022</li> </ul>

### Comments Register

Stakeholder	Comment Raised	GLC Response	Where Addressed
Cumberland City Council	Cumberland City Council advised that one section near the end of the Surface Water Quality Plan didn't have attachments – i.e Attachment 1 – proposed sample locations. They would like a copy of the water sample results upon request in case they had customer requests.	Figure now included at Attachment 2. GLC will work collaboratively with Council in the event that complaints are received in relation to water quality.	Attachment 2

Stakeholder	Comment Raised	GLC Response	Where Addressed
DPIE Water	Nil comments received	NA	NA
City Of Parramatta Council	Nil comments received	NA	NA
Sydney Water	Nil comments received	NA	NA

**Meeting Minutes**

## Document Transmittal

<b>Transmittal No:</b>	SMWSTWTP-GLO-TX-000090
<b>Contract No:</b>	WTP - 00013/13065 - Western Tunnelling Works Design and Construction Deed
<b>Sub Contract:</b>	WTP
<b>Date:</b>	14 April 2022, 07:58 AM

Issued	Name
By	Liem Ngo (Gamuda Laing O'Rourke Consortium)

Issued	Name
To	Andrew Hendy (Sydney Metro) ; Alicia Hatton (Sydney Metro) ; Kate Brooks (Sydney Metro)
Cc	Hayley Young (Gamuda Laing O'Rourke Consortium) ; Steph Mfsud (Gamuda Laing O'Rourke Consortium) ; Andy Thompson (Gamuda Laing O'Rourke Consortium) ; Huw Griffiths (Gamuda Laing O'Rourke Consortium) ; Tom Olorenshaw (Gamuda Laing O'Rourke Consortium)

<b>Reason for Issue</b>	Issued for Information
<b>Subject</b>	<b>Cumberland Council Meeting Minutes - 7 April 2022</b>

Dear all

Please find attached for your information, minutes for the meeting with Cumberland City Council on 7 April 2022.

Regards

Liem Ngo

Stakeholder and Community Engagement Manager  
 Sydney Metro West – Western Tunnelling Package  
 Gamuda Australia Laing O'Rourke Consortium

[Click here to download all Transmittal files.](#)

Item	Document No	Title	Rev	Sts	Type	Design Lots	Alt Doc No
1	<a href="#">SMWSTWTP-GLO-WMD-CY-MIN-000001</a>	Meeting Minutes - Cumberland City Council - 7 April 2022 - Project introduction and environmental management plans	A.01	S2	MIN		



# MEETING MINUTES

## Meeting details

<b>Meeting title</b>	Briefing for Cumberland City Council - Sydney Metro West Western Tunnelling Package Project and Environmental Management Plan consultation introduction	
<b>Date   Time</b>	7 April 2022, 15:30-16:15	
<b>Location</b>	MS Teams (online)	
<b>Attendees</b>	Gamuda Australia Laing O'Rourke (GLC):	Simon Hussey, Andy Thompson, Hayley Young, Huw Griffiths, Tom Olorenshaw, Liem Ngo, Stephanie Mifsud
	Sydney Metro (SM)	Andrew Hendy, Kate Brooks, Nikita Cullum
	Cumberland City Council (CCC)	Daniel Cavallo, Shona Porter, Daniel Anderson

## Item Information

1 Introductions and welcome

**Introductions of meeting participants were conducted**

## 2 Western Tunnelling Package & CEMP Consultation

2.1 **Andy Thompson delivered a presentation to provide an overview of the Sydney Metro West Western Tunnelling Package (WTP) including:**

- Introduction about Gamuda Australia and Laing O'Rourke
- Introducing the project team and key providers
- A construction overview, including project staging

2.2 **Tom Olorenshaw provided an overview of key construction, which will include:**

- HV trenching to bring in power supply for plant equipment will commence mid-2022 and will last 3-5 months
- Local area works to facilitate deliveries. Changes to kerbs, traffic lights and installation of pedestrian fencing to improve road safety are currently still in design. CCC will be consulted on proposed designs.
- Excavation works will start in 2023 and continue into 2024. This includes for the excavation of the station box, stub tunnels and cross over cavern. An acoustic shed will be built to mitigate noise from excavation.
- Tunnel Boring Machine (TBM) removal will from Westmead site will take approximately 6-8 weeks.

**Andy Thompson noted that Sydney Metro by changing the TBM launch site from Westmead to Rosehill, has substantially reduced the impact on Westmead due to the tunnel segments no longer needing to be delivered regularly to the Westmead site.**

2.3 **Liem Ngo provided an overview of potential stakeholder impacts, mitigation and engagement**

2.4 **Stephanie Mifsud presented the WTP Project's environmental approvals framework, including:**

- The environmental approvals process, including the Construction Environmental Management Plans.
- WTP Environmental Management plans framework and their interconnectedness with a range of WTP



Item	Information
	<p>procedures and strategies</p> <ul style="list-style-type: none"><li>• CEMP relationship with the WTP project's environmental management systems</li><li>• Inviting feedback on the various tranches of the CEMP, with the first tranches to submitted shortly to SOPA and other key stakeholders for consultation, with a 4-week consultation process proposed, involving:</li><li>• Step 1. 2-weeks for written feedback, Step 2 - in week 3, a comment review workshop for subject matter experts to address CCC feedback, Step 3 - in week 4, CEMPS to be amended to address comments discussed in the workshop</li></ul>

<b>3</b>	<b>Questions and Answers (CCC questions, GLC or SM answers)</b>
----------	---

**Q. What is the depth of the tunnels?**

A. Station box is between 30 and 37m from surface, stub tunnels are 25 metres from surface and the crown of the cross cavern tunnel is 15m from the surface.

**Q. Does tunnel depth limit basement depth for future developments?**

A. (GLC) Potentially. There will be restrictions on depth from operating rail lines which may impact future developments.

Action: GLC, via Sydney Metro/TfNSW will provide CCC with depth restrictions for future development.

**Q. With respect to the environmental management plans, is GLC seeking technical advice or fact-checking?**

A. Both. If the Council has feedback on technical issues GLC welcomes those issues being raised at this early stage so it can be discussed. GLC suggests that any feedback clearly identify the particular sections of a plan and clearly states the outcome CCC wants.

Action: Sydney Metro, when sending plans to CCC for review and feedback should address to Daniel Cavallo and copied to his EA, Sarah Hussein, to coordinate input from CCC.

	<b>Meeting finish</b>
--	-----------------------

<b>4</b>	<b>Next meeting</b>
----------	---------------------

Date: Consultation workshop date to be determined

Time: TBD

Location: TBD



West

## Document Transmittal

<b>Transmittal No:</b>	SMWSTWTP-GLO-TX-000072
<b>Contract No:</b>	WTP - Western Tunnelling Package
<b>Sub Contract:</b>	WTP
<b>Date:</b>	07 April 2022, 09:47 AM

Issued	Name
By	Liem Ngo (Gamuda Laing O'Rourke JV)

Issued	Name
To	Alicia Hatton (Sydney Metro) ; Andrew Hendy (Sydney Metro) ; Nick Nathans (Sydney Metro) ; Kate Brooks (Sydney Metro)
Cc	Hayley Young (Gamuda Laing O'Rourke JV) ; Steph Mfsud (Gamuda Laing O'Rourke JV)

<b>Reason for Issue</b>	Issued for Information
<b>Subject</b>	<b>SOPA Project &amp; CEMP briefing - Meeting Minutes - 1 April 2022</b>

Dear all

Please find attached for your information, meeting minutes for the 1 April 2022 meeting with SOPA.

Regards  
Liem Ngo

[Click here to download all Transmittal files.](#)

Item	Document No	Title	Rev	Sts	Type	Design Lots	Alt Doc No
1	<a href="#">SMWSTWTP-GLO-QLP-SK-MN-000001</a>	SOPA Project & CEMP briefing - Meeting Minutes - 1 April 2022	-01	S2	MIN		

Generated by InEight Document © 2001-2022 InEight Inc

Attachment(s):

# MEETING MINUTES

Meeting details							
<b>Meeting title</b>	Briefing for SOPA - Sydney Metro West Western Tunnelling Package Project and Environmental Management Plan consultation introduction						
<b>Date   Time</b>	1 April 2022						
<b>Location</b>	MS Teams (online)						
<b>Attendees</b>	<table border="0"> <tr> <td>Gamuda Australia Laing O'Rourke (GLC):</td> <td>Simon Hussey, Andy Thompson, Hayley Young, Huw Griffiths, Liem Ngo, Stephanie Mifsud</td> </tr> <tr> <td>Sydney Metro (SM)</td> <td>Nick Nathan (Facilitator/Chair), Andrew Hendy, Alicia Hatton, Sarah Lepre, Nikkita Cullum, Ian Subramanian</td> </tr> <tr> <td>Sydney Olympic Park Authority (SOPA)</td> <td>Sally Hamilton, John Ferguson, Vivienne Albin, Julie Currey</td> </tr> </table>	Gamuda Australia Laing O'Rourke (GLC):	Simon Hussey, Andy Thompson, Hayley Young, Huw Griffiths, Liem Ngo, Stephanie Mifsud	Sydney Metro (SM)	Nick Nathan (Facilitator/Chair), Andrew Hendy, Alicia Hatton, Sarah Lepre, Nikkita Cullum, Ian Subramanian	Sydney Olympic Park Authority (SOPA)	Sally Hamilton, John Ferguson, Vivienne Albin, Julie Currey
Gamuda Australia Laing O'Rourke (GLC):	Simon Hussey, Andy Thompson, Hayley Young, Huw Griffiths, Liem Ngo, Stephanie Mifsud						
Sydney Metro (SM)	Nick Nathan (Facilitator/Chair), Andrew Hendy, Alicia Hatton, Sarah Lepre, Nikkita Cullum, Ian Subramanian						
Sydney Olympic Park Authority (SOPA)	Sally Hamilton, John Ferguson, Vivienne Albin, Julie Currey						

Item	Information
1	Introductions and welcome

## **Introductions of meeting participants were conducted**

Nick Nathan (SM) provided an overview of the Sydney Metro West Project, including the three tunnelling packages and of the Stage 3 EIS currently open for public consultation.

Alicia Hutton (SM) introduced the GLC team, including Andy Thompson (GLC) to provide details about the Western Tunnelling Package (WTP)

<b>2</b>	<b>Western Tunnelling Package &amp; CEMP Consultation</b>
----------	---

### **2.1 Andy Thompson delivered a presentation to provide an overview of the Sydney Metro West Western Tunnelling Package (WTP) including:**

- Introduction about Gamuda Australia and Laing O'Rourke
- Introducing the project team and key providers
- A construction overview, including project staging
- Explanation of the combined Sydney Metro West construction site, including the WTP and the Central Tunnelling Package (CTP) sections
- The stages for the TBM retrieval and nozzle construction, site demobilisation and handover to CTP contractor

### **2.2 Liem Ngo provided an overview of potential stakeholder impacts, mitigation and engagement**

### **2.3 Stephanie Mifsud presented the WTP Project's environmental approvals framework, including:**

- The environmental approvals process, including the Construction Environmental Management Plans.
- WTP Environmental Management plans framework and their interconnectedness with a range of WTP procedures and strategies
- CEMP relationship with the WTP project's environmental management systems
- Inviting feedback on the various tranches of the CEMP, with the first tranches to submitted shortly to



Item	Information
	<p>SOPA and other key stakeholders for consultation, with a 4-week consultation process proposed, involving:</p> <ul style="list-style-type: none"><li>• Step 1. 2-weeks for written feedback, Step 2 - in week 3, a comment review workshop for subject matter experts to address SOPA feedback, Step 3 - in week 4, CEMPS to be amended to address comments discussed in the workshop</li></ul>

<b>3</b>	<b>Questions and Answers (SOPA questions, GLC or SM answers)</b>
----------	--

**Q. Will the WTP project tunnel under Haslams Creek?**

A. Yes

**Q. Is a site auditor involved and will a meeting be setup with SOPA?**

A. (GLC) Yes, Kylie Lloyd has been appointed the WTP site auditor and a meeting can be set up. It was noted that CTP will have a separate site auditor.

Action: GLC to set up meeting between the site auditor and SOPA.

**Q. Will the issues raised by SOPA during the CEMP consultation be addressed and closed out?**

A. (GLC) Yes. The workshop is designed to have the subject matter experts present to address SOPA's feedback and ensure any necessary changes to the CEMPs to reflect the discussions.

**Q. When will more detailed stakeholder engagement occur?**

A. (GLC) Since GLC is not planning to take possession of the site until December 2023 or early 2024. More detailed stakeholder engagement is likely to commence in first half of 2023. Although it was noted that both parties welcome dialogue on any issues that may emerge in the meantime.

**Q. How will the CEMPs be transmitted for consultation**

A. (GLC) GLC will submit to Andrew Hendy at Sydney Metro who will then distribute to respective stakeholder and interface managers to send to SOPA and other key stakeholders for consultation.

**Q. Is there an unexpected finds protocol?**

A. (GLC) Yes, there is.

**Q. Can the feedback given to CTP be shared with the WTP team?**

A. (SM) Feedback from consultation on CTP plans should be included within the respective plans which are now publicly available. Andrew Hendy will provide links to the GLC Environment and Planning team.

**Q. How with Sydney Metro coordinate WTP and CTP activities?**

A. (SM) Nick Nathan will coordinate CTP and WTP teams for SOP interface, via joint SOPA meetings or meet separately with each contract teams, as required.

	<b>Meeting finish</b>
--	-----------------------

<b>10</b>	<b>Next meeting</b>
-----------	---------------------

Date: Consultation workshop date to be determined (late April/early May)

Time: TBD

Location: TBD

**Meeting Summary****Total Number of Participants**

20

**Meeting Title**

SMW Introduction and CEMP Sub-Plans Briefing

**Meeting Start Time**

3/24/2022, 3:59:12 PM

**Meeting End Time**

3/24/2022, 4:46:41 PM

**Meeting Id**

18d00fea-6311-4935-8a5d-d89b04fb3722

<b>Full Name</b>	<b>Join Time</b>	<b>Leave Time</b>	<b>Duration</b>
Tania Page	3/24/2022, 3:59:12 PM	3/24/2022, 4:46:41 PM	47m 29s
Andy Thompson (GAB)	3/24/2022, 3:59:20 PM	3/24/2022, 4:46:37 PM	47m 17s
Sarah Lepre	3/24/2022, 3:59:51 PM	3/24/2022, 4:46:35 PM	46m 44s
Andrea Giusa	3/24/2022, 3:59:55 PM	3/24/2022, 4:46:41 PM	46m 45s
Ngo, Liem	3/24/2022, 4:00:04 PM	3/24/2022, 4:46:37 PM	46m 33s
Steph Mifsud (GAB)	3/24/2022, 4:00:09 PM	3/24/2022, 4:46:37 PM	46m 28s
Griffiths, Huw	3/24/2022, 4:00:25 PM	3/24/2022, 4:46:38 PM	46m 13s
Andrew Hendy	3/24/2022, 4:00:26 PM	3/24/2022, 4:46:38 PM	46m 11s
Bishwanand Mishra	3/24/2022, 4:00:30 PM	3/24/2022, 4:46:36 PM	46m 6s
Nikkita Cullum	3/24/2022, 4:00:32 PM	3/24/2022, 4:46:36 PM	46m 4s
Jim Tsom	3/24/2022, 4:00:34 PM	3/24/2022, 4:46:39 PM	46m 4s
Hayley Young (GAB)	3/24/2022, 4:01:17 PM	3/24/2022, 4:46:36 PM	45m 19s
Pino Todarello	3/24/2022, 4:01:22 PM	3/24/2022, 4:46:35 PM	45m 12s
Phillip Kelly	3/24/2022, 4:01:35 PM	3/24/2022, 4:46:36 PM	45m
Ian Subramaniam	3/24/2022, 4:01:35 PM	3/24/2022, 4:46:35 PM	45m
Simon Hussey (GAB)	3/24/2022, 4:01:55 PM	3/24/2022, 4:46:36 PM	44m 41s
Adrian Mihaila	3/24/2022, 4:03:52 PM	3/24/2022, 4:46:36 PM	42m 44s
Stuart Pike	3/24/2022, 4:04:52 PM	3/24/2022, 4:46:36 PM	41m 43s
Matthew Marrinan	3/24/2022, 4:05:05 PM	3/24/2022, 4:46:36 PM	41m 30s
Sasi Kumar	3/24/2022, 4:06:28 PM	3/24/2022, 4:46:36 PM	40m 8s

**Email**

Tania.Page2@transport.nsw.gov.au  
andy.thompson@gamuda.com.au  
Sarah.Lepre@transport.nsw.gov.au  
agiusa@cityofparramatta.nsw.gov.au  
LNgo@laingorourke.com.au  
steph.mifsud@gamuda.com.au  
HuwGriffiths@Laingorourke.com.au  
Andrew.Hendy@transport.nsw.gov.au  
BMishra@cityofparramatta.nsw.gov.au  
Nikkita.Cullum@transport.nsw.gov.au  
JTsom@cityofparramatta.nsw.gov.au  
hayley.young@gamuda.com.au  
PTodarello@cityofparramatta.nsw.gov.au  
Phillip.Kelly2@transport.nsw.gov.au  
Ian.Subramaniam@transport.nsw.gov.au  
simonhussey@gamuda.com.au  
AMihaila@cityofparramatta.nsw.gov.au  
SPike@cityofparramatta.nsw.gov.au  
Matthew.Marrinan@transport.nsw.gov.au  
SKumar@cityofparramatta.nsw.gov.au

**Role**

SM, Snr Project Manager Interfaces West  
GALC, Surface Works Construction Manager  
SM, Project Officer Environment  
CoPC, Heritage Advisor  
GALC, Stakeholder & Engagement Manager  
GALC, Environmental Manager  
GALC,  
SM, Manager Environment  
CoPC, Senior Catchment Referral Engineer  
SM, Graduate  
CoPC, Supervisor Catchment Management  
GALC, Environment & Sustainability Lead  
CoPC, Supervisor Open Space & Natural Resources  
SM, Stakeholder & Engagement Manager  
SM, Project Manager Interfaces West  
GALC, Deputy Project Director  
CoPC, Health & Building Services Manager  
CoPC, Team Leader Environmental Health Compliance  
SM, Snr Manager Environment  
CoPC, Development Manager Sydney Metro

**Copies of Correspondence**





27 April 2022

Attn: Hanka Shabilla  
Account Manager (Sydney Metro), Infrastructure Development  
Sydney Water  
PO Box 399  
PARRAMATTA NSW 2124

Dear Hanka,

**Sydney Metro SSI 10038 – Western Tunnelling Package – Gamuda Australia and Laing O’Rourke Consortium – Construction Soil and Water Management Sub-Plan and Construction Surface Water Quality Monitoring Program**

The Western Tunnelling Package (WTP) Package was recently awarded to Gamuda Australia and Laing O’Rourke Consortium (GALC). These works form part of the Sydney Metro West – Concept and Stage 1 (major civil construction between Westmead and The Bays) planning approval.

The planning approval requires the preparation of environmental management plans prior to construction commencing. Please find attached the Western Tunnelling Package (WTP) Construction Soil and Water Management Sub-Plan, and Construction Surface Water Quality Monitoring Program, issued to the Sydney Water for consultation in accordance with CSSI 10038 Condition of Approval C5.

Accompanying this letter is the following documents:

- WTP Soil and Water Management Sub-Plan
- WTP Surface Water Quality Monitoring Program

We are commencing a 3-week consultation process with you as of 27 April 2022 with this submission. During this period, we can hold an initial briefing session next week (week commencing 2 May 2022) at a time suitable to you. We can also hold a comment workshop in the third week (towards end of week commencing 9 May 2022). Your attendance is not mandatory, but highly advised to ensure you get the most out of the opportunity.

As the comment workshop is intended to respond to your comments, we would also like to receive comments prior to the workshop date, preferably by 11 May 2022. Please provide any comments via a comments register.

The consultation process will conclude on the date of the final workshop.

Should you have any questions or comments on the attached, please do not hesitate to contact Jonny Killen - Utilities Project Manager Sydney Metro West on 0420 497 647

---

**Sydney Metro**

Level 43, 680 George Street, Sydney NSW 2000 | PO Box K659, Haymarket NSW 1240  
T 02 8265 9400 | sydneymetro.info | ABN 12 354 063 515

Yours sincerely

A handwritten signature in blue ink, appearing to read "Stuart Hodgson". The signature is fluid and cursive, with a long horizontal stroke extending to the left.

**Stuart Hodgson**  
Director Sustainability, Environment & Planning  
Metro West  
Sydney Metro



27 April 2022

Attn Mr Daniel Cavallo  
Executive Manager City Strategy  
Cumberland City Council  
PO Box 42  
MERRYLANDS NSW 2160

Dear Daniel,

**Sydney Metro SSI 10038 – Western Tunnelling Package – Gamuda Australia and Laing O’Rourke Consortium – Construction Surface Water Quality Monitoring Program**

The Western Tunnelling Package (WTP) Package was recently awarded to Gamuda Australia and Laing O’Rourke Consortium (GALC). These works form part of the Sydney Metro West – Concept and Stage 1 (major civil construction between Westmead and The Bays) planning approval.

An introductory presentation was arranged by Sydney Metro to be provided by GALC on 7 April 2022.

The planning approval requires the preparation of environmental management plans prior to construction commencing. Please find attached the Western Tunnelling Package (WTP) Surface Water Quality Monitoring Program, issued to the Cumberland City Council for consultation in accordance with CSSI 10038 Condition of Approval C5.

Accompanying this letter are the following documents:

- WTP Surface Water Quality Monitoring Program

Consultation on this document(s) is required under condition C5 of SSI 10038 and we are commencing a 3-week consultation process with you as of 27 April 2022 with this submission. During this period, we will hold a comment workshop in the third week (week commencing 9 May 2022). Your attendance is not mandatory, but highly advised to ensure you get the most out of the opportunity.

As the comment workshop is intended to respond to your comments, we would also like to receive comments prior to the workshop date, preferably by 11 May 2022. Please provide any comments via a comments register.

The consultation process will conclude on the date of the final workshop.

Should you have any questions or comments on the attached, please do not hesitate to contact Matthew Marrinan, Senior Manager Environment on [Matthew.Marrinan@transport.nsw.gov.au](mailto:Matthew.Marrinan@transport.nsw.gov.au) or 0475 966 938.

---

**Sydney Metro**

Level 43, 680 George Street, Sydney NSW 2000 | PO Box K659, Haymarket NSW 1240  
T 02 8265 9400 | [sydneymetro.info](http://sydneymetro.info) | ABN 12 354 063 515

Yours sincerely

A handwritten signature in blue ink, appearing to read "Stuart Hodgson". The signature is fluid and cursive, with a long horizontal stroke extending to the left.

**Stuart Hodgson**  
Director Sustainability, Environment & Planning  
Metro West  
Sydney Metro



27 April 2022

Department of Planning and Environment - Water  
Locked Bag 5022  
PARRAMATTA NSW 2124

To whom it may concern,

**Sydney Metro SSI 10038 – Western Tunnelling Package – Gamuda Australia and Laing O’Rourke Consortium – Construction Surface Water Quality Monitoring Program**

The Western Tunnelling Package (WTP) Package was recently awarded to Gamuda Australia and Laing O’Rourke Consortium (GALC). These works form part of the Sydney Metro West – Concept and Stage 1 (major civil construction between Westmead and The Bays) planning approval.

The planning approval requires the preparation of environmental management plans prior to construction commencing. Please find attached the Western Tunnelling Package (WTP) Construction Surface Water Quality Monitoring Program, issued to the Department of Planning and Environment – Water for consultation in accordance with CSSI 10038 Condition of Approval C5.

Accompanying this letter is the following documents:

- WTP Surface Water Quality Monitoring Program

We are commencing a 3-week consultation process with you as of 27 April 2022 with this submission. During this period, we can hold an initial briefing session next week (week commencing 2 May 2022) at a time suitable to you. We will also hold a comment workshop in the third week (towards end of week commencing 9 May 2022). Your attendance is not mandatory, but highly advised to ensure you get the most out of the opportunity.

As the comment workshop is intended to respond to your comments, we would also like to receive comments prior to the workshop date, preferably by 11 May 2022. Please provide any comments via a comments register.

The consultation process will conclude on the date of the final workshop.

Should you have any questions or comments on the attached, please do not hesitate to contact Matthew Marrinan, Senior Manager Environment on [Matthew.Marrinan@transport.nsw.gov.au](mailto:Matthew.Marrinan@transport.nsw.gov.au) or 0475 966 938.

Yours sincerely

---

**Sydney Metro**

Level 43, 680 George Street, Sydney NSW 2000 | PO Box K659, Haymarket NSW 1240  
T 02 8265 9400 | [sydneymetro.info](http://sydneymetro.info) | ABN 12 354 063 515

A handwritten signature in blue ink, appearing to read "Stuart Hodgson". The signature is written in a cursive style with a long horizontal stroke extending to the left.

**Stuart Hodgson**  
Director Sustainability, Environment & Planning  
Metro West  
Sydney Metro



27 April 2022

Attn Mr Sasi Kumar  
Development Project Manager – Sydney Metro West  
City of Parramatta Council  
PO Box 32  
PARRAMATTA NSW 2124

Dear Sasi,

**Sydney Metro SSI 10038 – Western Tunnelling Package – Gamuda Australia and Laing O’Rourke Consortium – Construction Surface Water Quality Monitoring Program**

The Western Tunnelling Package (WTP) Package was recently awarded to Gamuda Australia and Laing O’Rourke Consortium (GALC). These works form part of the Sydney Metro West – Concept and Stage 1 (major civil construction between Westmead and The Bays) planning approval.

An introductory presentation was arranged by Sydney Metro and provided by GALC on 24 March 2022.

The planning approval requires the preparation of environmental management plans prior to construction commencing. Please find attached the Western Tunnelling Package (WTP) Construction Surface Water Quality Monitoring Program, issued to the Parramatta City Council for consultation in accordance with CSSI 10038 Condition of Approval C5.

Accompanying this letter is the following documents:

- WTP Surface Water Quality Monitoring Program

Consultation on this document(s) is required under condition C5 of SSI 10038 and we are commencing a 3-week consultation process with you as of 27 April 2022 with this submission. During this period, we will hold a comment workshop in the third week (week commencing 9 May 2022). Your attendance is not mandatory, but highly advised to ensure you get the most out of the opportunity.

As the comment workshop is intended to respond to your comments, we would also like to receive comments prior to the workshop date, preferably by 11 May 2022. Please provide any comments via a comments register.

The consultation process will conclude on the date of the final workshop.

Should you have any questions or comments on the attached, please do not hesitate to contact Matthew Marrinan, Senior Manager Environment on [Matthew.Marrinan@transport.nsw.gov.au](mailto:Matthew.Marrinan@transport.nsw.gov.au) or 0475 966 938.

---

**Sydney Metro**

Level 43, 680 George Street, Sydney NSW 2000 | PO Box K659, Haymarket NSW 1240  
T 02 8265 9400 | [sydneymetro.info](http://sydneymetro.info) | ABN 12 354 063 515

Yours sincerely

A handwritten signature in blue ink, appearing to read "Stuart Hodgson". The signature is fluid and cursive, with a long horizontal stroke extending to the left.

**Stuart Hodgson**  
Director Sustainability, Environment & Planning  
Metro West  
Sydney Metro